

Ring Catch and Pulls

Flush Ring Catch

Material: Zinc Alloy with Phosphor Bronze Spring
 Finish: Chrome Plated
 Dimensions: 2-1/4" x 1-3/8"
 Screw Size: #6

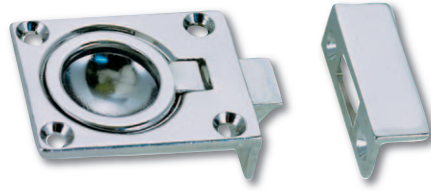


Fig. 1051

Retail Pkg.	OEM Bulk Pkg.
1051DP0CHR	1051000CHR

Flush Pull

Material: Zinc Alloy and Stainless Steel
 Finish: Chrome Plated
 Dimensions: Face Plate: 3-11/16" x 1-11/16"
 Depth: 7/16"
 Screw Size: #6



Fig. 1110

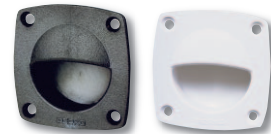
Retail Pkg.	OEM Bulk Pkg.
1110DP0CHR	1110000CHR

Flush Pull

Material: Polymer
 Finish: Black, White, or Ivory
 Dimensions: Face Plate: 2-1/4" x 2-1/4"
 Depth: 15/16"
 Installation: Installs in a 1-3/4" Diameter Hole
 Screw Size: #6

**NEW
COLOR**
Ivory

Fig. 1016
Ivory



Black

White

Color	Retail Pkg.	OEM Bulk Pkg.
Black	1016DP0BLK	1016000BLK
White	1016DP0WHT	1016000WHT
Ivory	1016DP0IVR	1016000IVR

Pull

Material: Zinc Alloy
 Finish: Chrome Plated
 Dimensions: Width Overall: 3-7/16"
 Width Inside: 2-5/16"
 Screw Size: #6



Fig. 0958

Retail Pkg.
0958DP0CHR